

In Search of Wildlife at a Snail's Pace



3.5 miles



Walk Information

Start point: Memorial Clock Tower, Lynn Road, Grimston, King's Lynn, Norfolk, PE32 1AA

Grid ref.: TF 720224

Map: Ordnance Survey – Explorer 250

Walking time: 2 hours

Walk Summary

This walk takes you through three parishes in the heart of the **Gaywood Valley Living Landscape**. This is a wonderful route taking in farmland, woodland and quiet country lanes. Look out for common buzzards soaring over head and butterflies skimming the nectar-rich hedgerows. This is a lovely walk for those who want a mid-length walk with great local pubs and much to see.

Please note:

- Dogs are welcome on this walking route but should at all times be kept on a lead and under close control.
- At times this walk can be very muddy.
- Extreme care should be taken on the sections of the walk which involves walking along roads.
- Cattle may be present on this route.

Walk Notes

1 Start at the memorial clock tower, opposite the post office. Head along Lynn Road, passing Wesley Chapel (1873) on your right.

2 Shortly after Wesley Chapel turn left between two properties onto a grassy track. Take the track through an agricultural field following the telegraph poles through the middle of the field; you will be able to see St. Botolph's Church on your left.

3 At the fifth telegraph pole you reach a footpath sign. Take the footpath on the right, cross the field heading towards the right-side of the hedgerow in front of you.

4 At the hedgerow keep straight ahead (the hedge will now be on your left). After a short distance cross over the bridge through a gap in the hedge and continue straight ahead on the footpath.

5 When you reach a barn on your left cross over a track and take the footpath straight ahead.

The school hedge is made up of **field maple** which in Norfolk is known as **dog oak**.

6 At the next footpath junction keep straight ahead, keeping the hedge on your left, this is the boundary to a local school.

If you happen to be walking this route during the winter keep your eyes peeled for **mistletoe**, an evergreen plant, found growing on trees.

7 Continue along the footpath ignoring any paths on your right through the meadow. Eventually the path is bordered by a residential area on your left. At the end of the fence line you come out onto a small grassed area, bear right. This path leads out onto Chapel Road.

8 When you emerge onto Chapel Road turn right along the path until you get to Back Lane on your right. Head down Back Lane which eventually turns into a track. After approximately half a mile on the left, past some houses, you will see a gate and a stile, take this footpath.

9 When you reach a quiet lane cross it, passing some cottages on your left, then you will reach Lynn Road. Bear right when crossing the road, and look for a concealed footpath between a large red brick house and another property. Take this footpath.

Congham plays host to the annual **World Snail Racing Championships**. Over 300 snails race hard (although some are a little sluggish).

10 Walk along this grassy track passing through a gate and over a stile into a field. Carry on straight ahead across the field to a gate that leads through a small woodland.

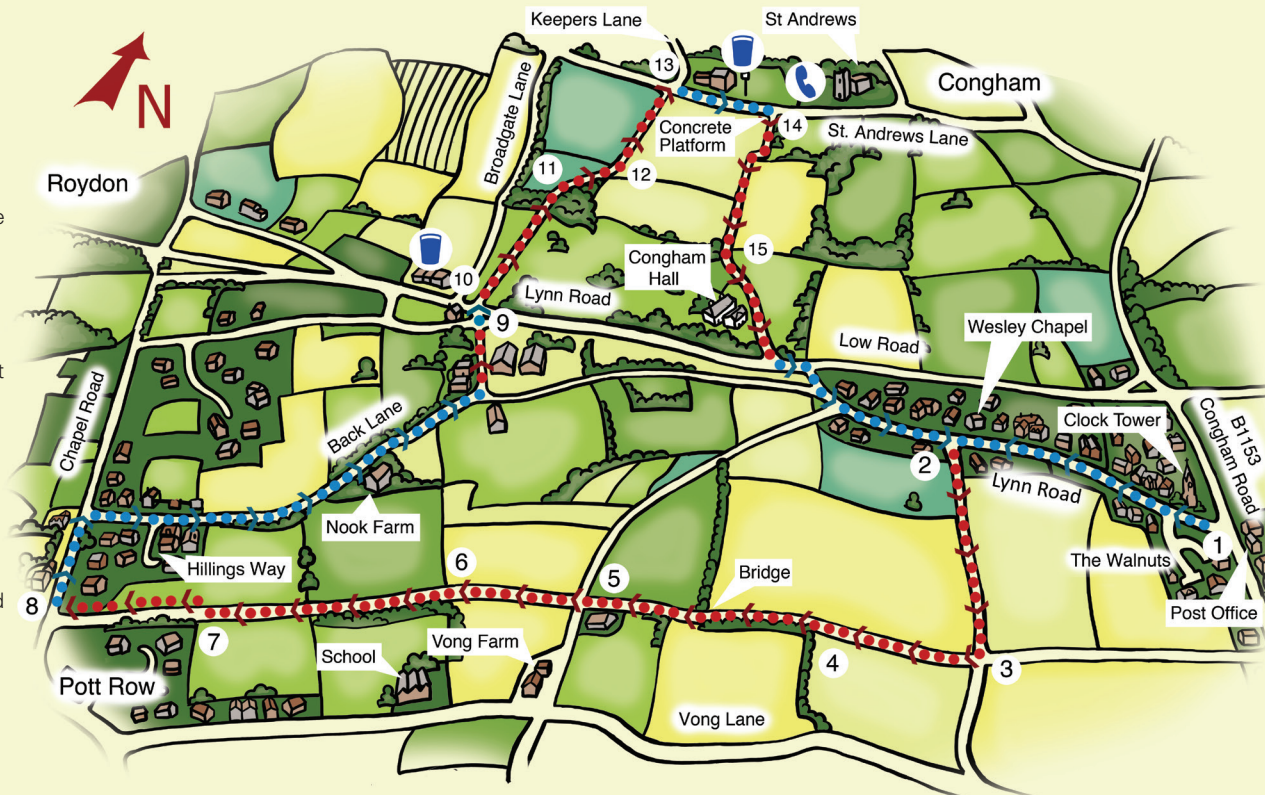
11 Cross over a small footbridge, bearing right to follow a path along the edge of an agricultural field, keeping the hedge and then drainage ditch on your right.

12 When you reach the end of the hedge keep straight ahead and walk towards the houses on St. Andrews Lane.

13 When you reach the road turn right and carry along the lane passing the Anvil Free House on your left.

14 When you reach a red postbox turn right, onto a concrete platform, and follow the left-hand field edge, veering right slightly when the field meets another field.

15 The path eventually leads you through a wooded area and onto an open field and then a car park. Veer to the left-hand side of the car park and follow the way marker posts, crossing a small footbridge under tree cover. Head on along a trodden track around the edge of the cricket pavilion through a gate onto Lynn Road. Cross the road and turn left, following Lynn Road around the bend back to the memorial clock tower where you started.



Key

- Telephone box
- Pub
- Public right of way (walk route)
- Public road (walk route)

Putting wildlife on the map

Help us protect the wildlife of the Gaywood Valley Living Landscape by telling us what you see whilst you are on this walk. Wildlife records are really important as they help us to build a picture of what is out there. We would love to know about the animals and plants you spot whilst you are on this walk.

To submit your wildlife sightings for this walk:

Email: wild@norfolkwildlifetrust.org.uk. Tell us what you saw, when you saw it and where you saw it.

Phone Norfolk Wildlife Trust: 01603 598333

Submit your sightings online: visit www.wild-walks.org.uk

Wildlife to look out for:



Yellowhammer

☐

Skylark

☐

Red admiral

☐

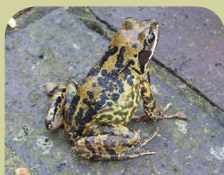
Brown hare

☐

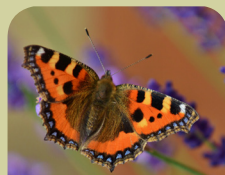
Roe deer

☐

Grey partridge

☐

Common frog

☐

Small tortoiseshell

☐

Wildwalks

Take a Wildwalk today and help put Norfolk's wildlife on the map.

By visiting www.wild-walks.org.uk you can map your favourite walk and tick off the plants and animals you see along the way, helping us build a picture of where wildlife is found and how nature changes.

This walk was produced by Norfolk Wildlife Trust (NWT). A great deal of care has gone into the production of this walk leaflet, but NWT cannot accept any responsibility for the misinterpretation of route descriptions nor for any accidents resulting from this walk.