



# In Step with the Heath

4.5 miles



## Walk Information

**Start point:** NWT Roydon Common, West Car Park, Lynn Road, Roydon, Norfolk

**Grid ref.:** TF 680229

**Map:** Ordnance Survey – Explorer 250

**Walking time:** 2.5 hours

## Walk Summary

**NWT Roydon Common** and the surrounding countryside is a wildlife gem nestled within the **Gaywood Valley Living Landscape**. This circular walk takes you through valuable wildlife habitats such as heathland, woodland and fen. Take the time to stop and look for wildlife as you follow this route. Who knows what you might find.

## Please note:

- Dogs are welcome on this walking route but should at all times be kept on a lead and under close control.
- At times this walk can be very muddy.
- Extreme care should be taken on the sections of the walk which involves walking along roads.
- Horses may be present on this route.



# Walk Notes

**1** With Lynn Road behind you walk along the sandy track onto NWT Roydon Common. As you pass through a pedestrian gate you will see on your left an interpretation board about the reserve.

NWT Roydon Common is one of only two sites in Norfolk where the **black darter dragonfly** occurs.

**2** After the interpretation board you will see two paths on your left. Take the second path which is marked with a post and arrow. This path takes you through the heathland (at its best in August when the heather is in flower).

As you walk through **NWT Roydon Common** and past **Grimston Warren** keep your eyes peeled for **Dartmoor ponies** and **koniks**. These horses help to keep scrub under control on the reserves.

**3** When you reach a gate go through it and turn left onto a wide sandy track. Continue along this path ignoring any other paths to the right or left.

**4** Just after you pass a white railway cottage on your right you will see a gate on your left. Go through the gate and take the main path which leads you through Hudson's Fen.

**Hudson's Fen** is a **County Wildlife Site** managed by **The Grimston Fen and Allotment Trust**.

**5** After a short distance you will see a gate on your right, take this footpath and continue along it until you see a road.

**6** Just before you reach the road you will see a gate on your left, go through this and walk past the playground on your left. Go through the next gate and continue straight ahead, keeping the ditch to your left and the road to your right.

**7** When you reach the main road cross over and head onto the signed footpath which takes you into a wooded area. Continue straight ahead ignoring any paths on your left.

**8** When the path reaches a Tjunction bear right out of the wood, then turn immediately left. This will take you past an industrial unit on the right and lead you to a gate. Once through the gate head diagonally across the field (to the left of the houses) to a gate and out onto an unmaded road.

**9** Turn left onto the unmaded road and then first right onto a wide path that quickly narrows. Continue along the path until you reach Church Lane (ignore any paths on your right).

**10** When you reach the road turn left (ignore the gravel footpath on the left).

This area of the Gaywood Valley Living Landscape is a great place for seeing **roe deer** and **brown hares**. Keep your eyes peeled.

**11** Walk along the road until you reach a sign for Hall Farm. At this point bear left. Shortly along the farm drive you will see a footpath on your right, take this. When you pass a barn on your left you will see a track into a field on your right, ignore this field entrance, continue straight ahead on the main path.

**12** Eventually when the path splits bear left and continue walking, with the hedgerow on your right.

**13** When you reach a small wood on your right the footpath bears right and then left. Continue straight ahead keeping the hedge on your left.

**14** After a short while the path bears left and leads you to Lynn Road. Turn left and head back to the start point taking extreme care as this is a very busy road.



## Key

- P Parking
- P Pub
- ! Hazard
- Public right of way (walk route)
- Public road (walk route)



# Putting wildlife on the map

Help us protect the wildlife of the Gaywood Valley Living Landscape by telling us what you see whilst you are on this walk. Wildlife records are really important as they help us to build a picture of what is out there. We would love to know about the animals and plants you spot whilst you are on this walk.

## To submit your wildlife sightings for this walk:

**Email:** [wild@norfolkwildlifetrust.org.uk](mailto:wild@norfolkwildlifetrust.org.uk). Tell us what you saw, when you saw it and where you saw it.

**Phone Norfolk Wildlife Trust:** 01603 598333

**Submit your sightings online:** visit [www.wild-walks.org.uk](http://www.wild-walks.org.uk)

## Wildlife to look out for:



Yellowhammer



Hoof fungus



Red admiral



Brown hare



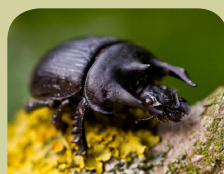
Roe deer



Grey partridge



Black darter



Minotaur beetle



## Wildwalks

### Take a Wildwalk today and help put Norfolk's wildlife on the map.

By visiting [www.wild-walks.org.uk](http://www.wild-walks.org.uk) you can map your favourite walk and tick off the plants and animals you see along the way, helping us build a picture of where wildlife is found and how nature changes.

This walk was produced by Norfolk Wildlife Trust (NWT). A great deal of care has gone into the production of this walk leaflet, but NWT cannot accept any responsibility for the misinterpretation of route descriptions nor for any accidents resulting from this walk.