

**Nature Recovery Strategy  
2023-2030**



# Transforming nature's recovery in Norfolk



The  
**Wildlife**  
Trusts

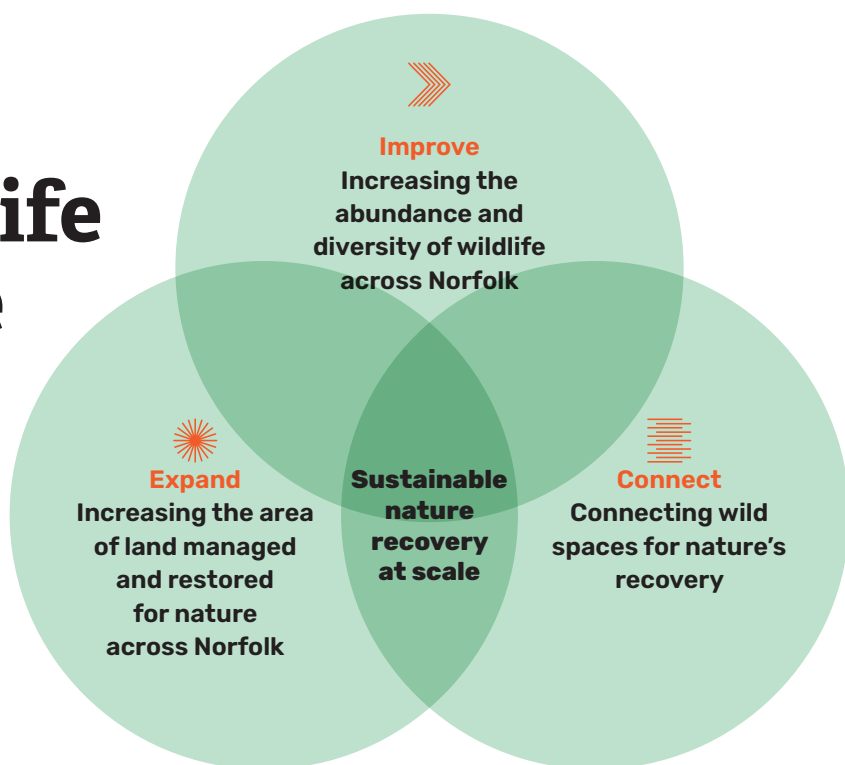
# Our vision for nature's recovery

Imagine Norfolk's landscape is a well-connected tapestry of wildlife habitats, teeming with life. Nature reserves rich in reedbeds, heath and woodland nurture Norfolk's rarest species. Swifts soar above our villages and towns, looking down on bushy hedgerows, glistening ponds and flower-filled meadows, parks and gardens

that are a haven for songbirds, hedgehogs and bees. Wildlife on land and in the sea is at the heart of decision-making about Norfolk's future, as clean rivers flow into newly created wetlands that not only provide more space for nature but help us all adapt to the impacts of climate change.



## Norfolk Wildlife Trust is at the forefront of nature's recovery in Norfolk by:



### Improve

We are **increasing the abundance and diversity of wildlife across Norfolk** in our land and sea by creating a resilient environment where wildlife can thrive. This includes:

- Caring for our existing nature reserves and seeking to establish new ones as important refuges for Norfolk's wildlife and as examples of best practice in managing land for wildlife.
- Ensuring County Wildlife Sites are protected and well managed.
- Inspiring people across Norfolk to take action for wildlife.
- Working with communities, developers and statutory regulators to protect and recover biodiversity on land, in rivers and in the sea.



### Expand

We are **increasing the area of land managed and restored for nature across Norfolk**, contributing to the national Wildlife Trusts' aim of 30% of the UK's land and sea managed for nature by 2030 by:

- Expanding the amount of land that we own and manage for wildlife
- Recovering nature across thousands of hectares of Norfolk's landscape by working with partners, land managers and communities.
- Developing innovative, long-term and sustainable projects that also draw down carbon, reduce local flooding and give struggling species a chance to thrive.



### Connect

We are **connecting wild spaces for nature's recovery** by:

- Leading the way on collaborating, co-ordinating and advocating for collective action towards a nature recovery network on land and in the sea.
- Putting Norfolk's wildlife and nature recovery network at the heart of important decision-making about the county's future.



# Transforming nature's recovery – the map

**Marine**

Advocating for marine wildlife in decision-making processes; supporting partners regenerating nature in the sea; and inspiring communities to help protect and understand nature beneath the waves.

**North Norfolk Woods and Heaths**

Expanding, buffering and re-connecting relict and historic heaths; increasing the area and connectivity of broadleaved woodland.

**Urban**

Promoting and supporting communities taking action for wildlife by creating and caring for natural spaces.

**North Norfolk Coast**

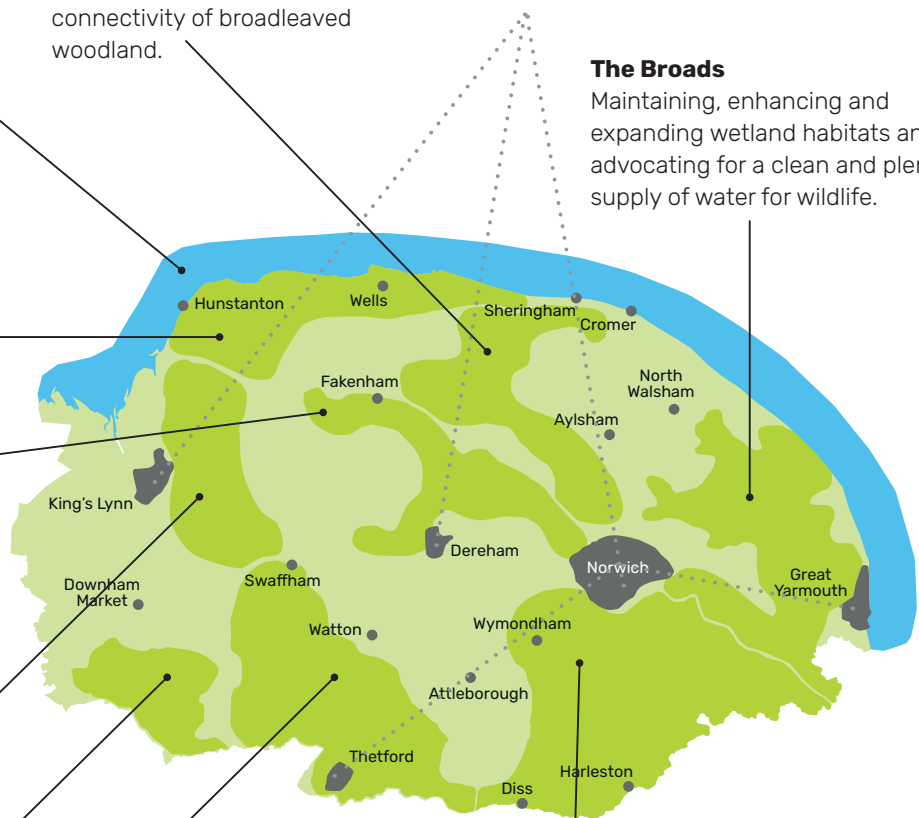
Maximising areas of climate resilient habitats associated with the coast and its hinterland, including chalk streams.

**The Broads**

Maintaining, enhancing and expanding wetland habitats and advocating for a clean and plentiful supply of water for wildlife.

**River Wensum**

Restoring the floodplain of the river and its tributaries, buffered with appropriate habitats mosaics; advocating for a clean and plentiful supply of water for wildlife.



**Greensand Ridge**

Restoring and creating mosaics of priority habitat relevant to the underlying geology and hydrology, such as chalk streams.

**Claylands**

Promoting connectivity for wildlife across this ancient landscape through the creation and restoration of hedges, woods, meadows, ponds and habitats alongside the river Waveney and its tributaries.

**The Fens**

Restoring and creating wetland habitat, particularly on peat soils.

**Breckland**

Maintaining, enhancing and connecting habitats including Brecks heaths, pingos and on the Brecks river valleys.

**Core Nature Recovery Areas**

Areas where NWT is transforming nature's recovery by improving, expanding and connecting spaces for wildlife, and by actively looking for more opportunities to create new habitats at scale. Work in these areas will also include caring for NWT nature reserves and providing advice to County Wildlife Site owners.

**Wilder Landscapes Area**

Area where NWT works with partners, including land managers, to support nature's recovery. Our actions include:

- Maintaining, enhancing and expanding NWT nature reserves.
- Promoting and supporting effective management of County Wildlife Sites.
- Promoting the need for a connected landscape for wildlife.
- Supporting community action for wildlife.
- Supporting large-scale habitat creation opportunities.
- Advocating for nature and a healthier natural environment.
- Undertaking targeted species recovery projects.

# Our nature recovery principles

To ensure we deliver our ambition for nature's recovery at an unprecedented scale and pace, we are:

## Leaders for nature

- Inspiring and empowering people from all backgrounds to take meaningful action for nature.
- Co-ordinating transformative and collaborative nature recovery action by working alongside conservation partners, land managers, communities and individuals.

## Delivering quality and expertise

- Expanding our reputation for high quality nature conservation.
- Employing scientific evidence and sound ecological principles to guide our decisions.

## Driving innovation

- Developing, delivering and promoting new, financially stable models for long-lasting nature recovery.
- Ensuring that addressing climate change and wider environmental issues lies at the heart of our advocacy, land management and advice.



## There are many ways to help bring back Norfolk's wildlife throughout our landscape.



You can play a part in creating thousands of hectares of new, wilder spaces for nature on your land or in your community.

Find out more:  
[norfolkwildlifetrust.org.uk/naturerecovery](https://norfolkwildlifetrust.org.uk/naturerecovery)

Get in touch:  
[info@norfolkwildlifetrust.org.uk](mailto:info@norfolkwildlifetrust.org.uk)

Together, we can create  
a Wilder Norfolk for All



**Norfolk Wildlife Trust**  
Bewick House, 22 Thorpe Road, Norwich NR1 1RY  
Tel: 01603 625540  
Email: [info@norfolkwildlifetrust.org.uk](mailto:info@norfolkwildlifetrust.org.uk)  
[norfolkwildlifetrust.org.uk](https://norfolkwildlifetrust.org.uk)

Registered charity 208734

NWT2024013



The Wildlife Trusts



NorfolkWT



[norfolkwt](https://www.instagram.com/norfolkwt)



[NorfolkWildlifeTrust](https://www.facebook.com/NorfolkWildlifeTrust)



FUNDRAISING  
REGULATOR