



Wilder Schools

Programme
information and
recruitment
pack



The
Wildlife
Trusts

The Wilder Schools programme has been supported by funding from the NWT Children and Nature Fund and Friends of Holt Hall Charitable Trust.

norfolkwildlifetrust.org.uk

Programme offer

Wilder Schools is a three-year, fully-funded programme working to support children and school communities to connect with nature and care for wildlife in their school grounds.

Through nature-based, curriculum-linked sessions, our Wilder Schools programme aims to improve children's wellbeing and learning outcomes, and to empower school communities to maximise the biodiversity of their sites and beyond!

The Wilder Schools programme has been supported by funding from the NWT Children and Nature Fund and Friends of Holt Hall Charitable Trust.

Wilder Schools and the Department for Education's (DfE) Sustainability and Climate Change Strategy:

The Department for Education's Sustainability and Climate Change Strategy requires all schools have a Climate Action Plan (CAP) by the end of 2025. In joining the Wilder Schools programme, schools will be taking action for nature and wildlife, supporting all four pillars of a school's CAP.

Participation in the Wilder Schools programme also supports schools taking part in the DfE's National Education Nature Park, Climate Ambassadors and Let's Go Zero initiatives, all of which support implementation of the DfE strategy and a school's CAP.



© NWT



Programme outline

Over the course of the three-year programme, each Wilder School will develop knowledge, confidence and skills in delivering outdoor learning and wellbeing sessions, and taking action for nature in meaningful and engaging ways.

See below for an outline of each year, but please note that specific content will vary according to each school (please get in touch with us if you would like more details):

Year 1 – Discovery and action planning:

- Norfolk Wildlife Trust (NWT) staff work with one year group (either Year 3 or Year 4) through regular outdoor learning-based sessions
- A free visit to a NWT site for participating year group (including transport)
- NWT staff deliver two twilight sessions with school staff
- Provision of NWT Wilder School resources to support the development of biodiversity improvements, wellbeing activities and curriculum based outdoor learning
- School joins 'NWT Nature Educators Network' for peer to peer support, and access to resources and information
- School sets up a regular cross-school pupil club or group in preparation for Year 2

Year 2 – School-based action:

- NWT support school staff to lead a regular, cross-school pupil group or club
- NWT deliver two twilight sessions with school staff
- School supported in applying ideas from NWT Wilder School resources to make changes within school
- NWT organise and provide a specialist-led session for a select group of pupils

Year 3 – Building a network:

- NWT continue to support school staff to lead a regular, cross-school pupil group or club
- NWT support school to develop reciprocal links with local community groups
- NWT deliver two twilight sessions with school staff
- Celebration of achievements and future plans, with a school and local community event

'I don't want Wilder Schools to end'

– Child at Mile Cross Junior School

'I love it when you come here. I love learning about nature'

– Child at Angel Road Junior School

Eligibility criteria

In order to make sure your school is suitable for the programme, please consider the questions below:

- Are you a Norfolk primary school?
- Do you have school grounds you would be able to make changes to?
- Are the senior leadership team within the school willing to support the whole school community to take part in the three-year Wilder School programme? (subject to unforeseen circumstances)
- Is there a key member of school staff who is willing to take responsibility for and be the lead on this long-term project, with the support of NWT?
- Are you able to set up a regular cross-school pupil group or club, which will continue over the course of the project and beyond?
- Would you be willing to welcome parent helpers, volunteers or other members of the community into your school as part of the programme?

Want to get involved? We'd love to hear from you! Visit our [website](https://www.norfolkwildlifetrust.org.uk) and complete the online application form for a chance to take part. Please note, spaces are limited!

[norfolkwildlifetrust.org.uk/WilderSchools](https://www.norfolkwildlifetrust.org.uk/WilderSchools)



© NWT

Working together

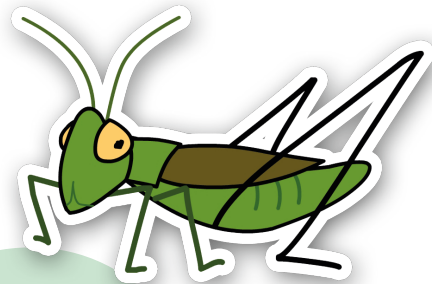
Working together effectively is essential to the success of the programme. In order for this to happen, NWT and each school that takes part agree to the following:

Norfolk Wildlife Trust commits to

- Providing trained staff to lead visits and training, and delivering outdoor learning sessions as agreed in advance (subject to unforeseen circumstances)
- Providing school staff with session plans, including risk assessments, before each visit to school
- Ensuring groups receive timetables, risk assessments and site details in advance of their visit to a NWT reserve
- Briefing groups on the day of the visit on health and safety aspects of the activities
- Maintaining the condition and safety of equipment
- Assessing sessions in the light of feedback and striving to improve them in accordance with groups' needs

Your school commits to

- Supervising the pupil group, and ensuring safe and appropriate behaviour among group members at all times
- Ensuring class teachers attend NWT-led pupil sessions in the first year of the program
- Providing primary first aid care and ensuring appropriate adult-pupil ratios for the group are in place
- Ensuring group members are appropriately dressed, prepared and equipped for the activities
- Ensuring the group uses NWT equipment carefully and returns it in good condition
- Committing to teacher training opportunities – minimum of one teacher from each year group to attend teacher training
- Providing constructive feedback to NWT on sessions provided



'They should be doing that all the time, it looked like great fun'

- Teacher at Angel Road Junior School

**Thanks for your interest in our Wilder Schools programme
– we hope you will want to take part!**

**For more information about our Wilder Schools programme,
and for the application form to apply to be part of our September
2025 cohort of Wilder Schools, please see our website:
norfolkwildlifetrust.org.uk/WilderSchools, or email us any queries
at educationenquiries@norfolkwildlifetrust.org.uk**

Please note, spaces on the programme are limited!

We look forward to hearing from you!

Norfolk Wildlife Trust

Bewick House, 22 Thorpe Road, Norwich NR1 1RY

E: info@norfolkwildlifetrust.org.uk T: 01603 625540

Registered charity 208734



norfolkwildlifetrust.org.uk